



**THERMALTM
RADAR**
Visionary Thermal Detection

Cost-Effective 360° Threat Detection



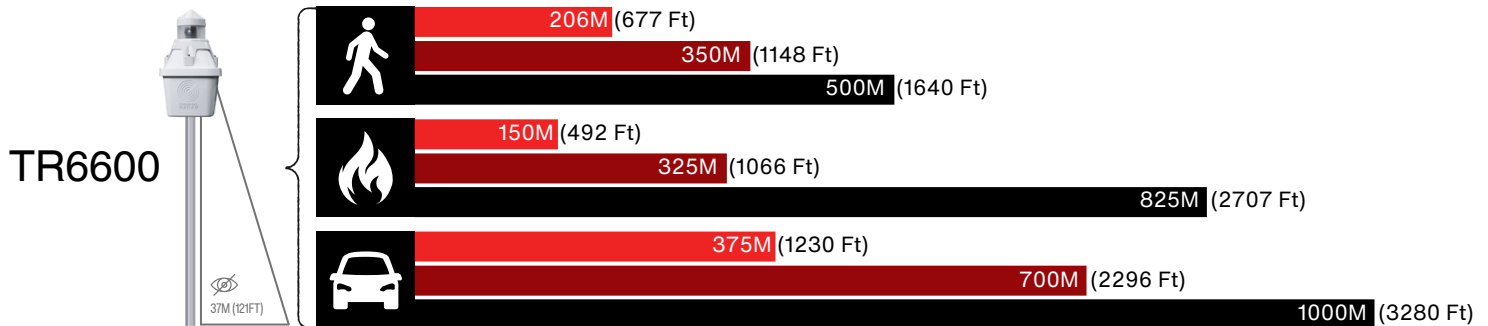
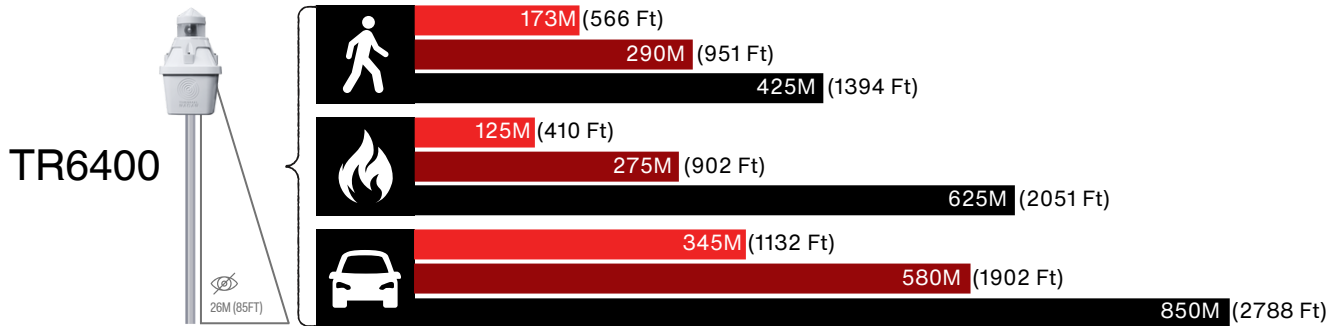
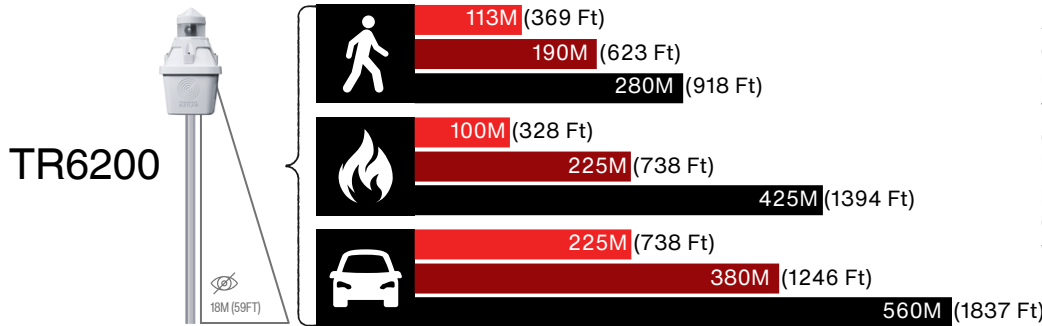
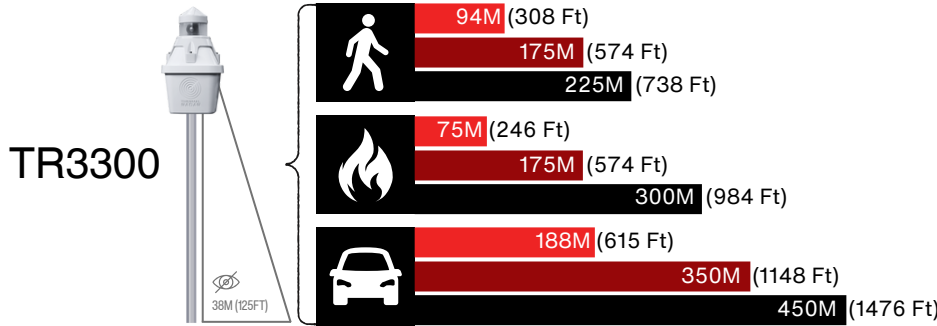
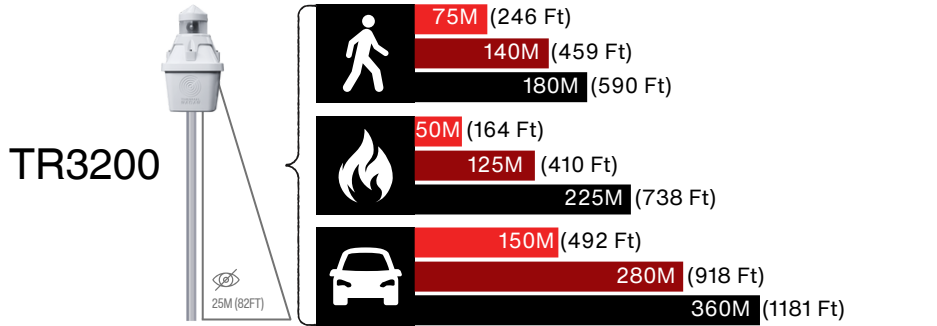
Thermal Radar is a patented network-based thermal surveillance and detection solution providing constant 360° situational awareness. By rapidly rotating a FLIR Boson thermal sensor and running edge analytics, Thermal Radar can be used as a stand-alone detection outpost or the centerpiece of your integrated physical security strategy. The patented Thermal Radar system integrates with VMS and PSIM platforms and displays the full 360° detection area, integrated geospatial map, and event alerts.

DETECTION RANGES



THERMAL RADAR™

Visionary Thermal Detection



High Confidence Distance
Mid-Range Distance
Maximum Distance



Actual detection ranges may vary significantly depending on environmental factors, installation specifics, and other variables unique to the location. High humidity, for example, can reduce thermal contrast and impact detection performance, particularly over longer distances. Therefore, the distances shown here should be used as general estimates and not definitive guarantees of performance. We recommend consulting with security experts or certified installers to ensure the product and its installation align with your specific security requirements.

Thermal Radar's fire detection analytics are designed to enhance early fire detection through advanced thermal imaging technology. However, performance may be influenced by atmospheric conditions such as fog, smoke, rain, snow, and humidity, which can affect visibility, detection accuracy, and range. Additionally, factors like fire size, intensity, growth rate, and the fire's distance from the camera may impact the system's ability to detect fires in a timely manner. This product does not guarantee the detection of all fires or the protection of property, assets, or individuals from fire-related damage or harm. Thermal Imaging Radar assumes no liability for fires that are not detected, or for any loss, injury, or damage resulting from a fire, regardless of the system's operational status. It is recommended that the Thermal Radar system be used as part of a comprehensive, multi-layered security and fire safety plan.

SPECIFICATIONS

3- and 6-Series



**THERMAL
RADAR**[™]
Visionary Thermal Detection

	3-Series	6-Series
THERMAL IMAGER		
Type	FLIR Boson™, Uncooled VOx Microbolometer	FLIR Boson™, Uncooled VOx Microbolometer
Frame Rate	9Hz/60Hz	9Hz/60Hz
FPA Resolution	320 X 256 pixels	640 X 512 pixels
Image Bit Depth	16-bit thermal infrared	16-bit thermal infrared
Lens Focal Length	4.3mm, 6.3mm, 9.1mm	8.7mm, 14mm, 18mm, 24mm
Configuration	White hot or black hot configurable	White hot or black hot configurable
SPEED AND RESOLUTION		
Rotation Speed	Between 15 and 60 RPM	Between 15 and 60 RPM
Image HFOV	360°	360°
Image VFOV	19.2°, 27.3°, or 40°	19.5°, 25.6", or 40°
Image Resolution	320 X 256 per station	640 X 512 per station
POWER REQUIREMENTS		
Input Power	IEEE PoE+ (802.3at) – LTPoE++ (90W)	IEEE PoE+ (802.3at) – LTPoE++ (90W)
Input Connection	RJ 45	RJ 45
Power Consumption	16W Average	16W Average
PROCESSOR AND ANALYTICS		
Processor	Quad Core 64-bit	Quad Core 64-bit
Memory	4GB Ram (Upgrade Available)	4GB Ram (Upgrade Available)
Embedded Analytics	Intrusion (Security) & Fire Detection	Intrusion (Security) & Fire Detection
Available Analytics	Optional Advanced AI-Powered Analytics for Enhanced Classification and Deeper Data Insights	
Detection Zones	Configurable areas of interest, exclusions, motion filters, skip stations, and priority zones	
COMMUNICATION/NETWORK SECURITY		
Ethernet	Autoswitch 100 Mbps–1 Gbps	Autoswitch 100 Mbps–1 Gbps
Network Security	HTTPS & TLS with password protection	HTTPS & TLS with password protection
ENVIRONMENTAL		
Operating Temperature Range	-35° to + 60° C (Up to 75° C Available)	-35° to + 60° C (Up to 75° C Available)
Storage Temperature Range	-35° to + 85° C	-35° to + 85° C
Protection Standard	IP67	IP67
PHYSICAL		
Dimensions	5.75" (W) X 7.075" (H) (146 mm X 197mm)	5.75" (W) X 7.075" (H) (146 mm X 197mm)
Weight	<7 lbs. (3 Kilos)	<7 lbs. (3 Kilos)
GENERAL		
PTZ Integration	PTZ Slew-to-Cue commands upon detection	PTZ Slew-to-Cue commands upon detection
VMS Integration	ONVIF compliant RTSP stream, alerts	ONVIF compliant RTSP stream, alerts
Warranty	2 Years	2 Years
VIDEO		
Video Compression & Streaming	H.264	H.264
Resolution	1080p	1080p
Frame Rate	30 FPS	30 FPS





**THERMAL
RADAR**
Visionary Thermal Detection

Simultaneous detection of multiple targets.



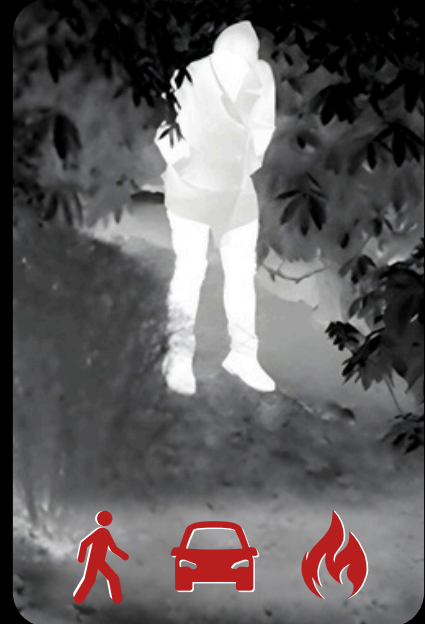
Patented thermal video feed displaying full 360° coverage area.

Geospatial location-based detection alerts.

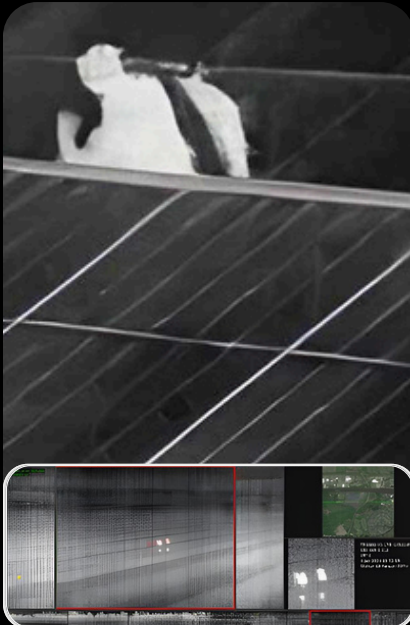


Reduces device count, infrastructure & licensing costs.

Edge analytics for human, vehicle, and fire detection.



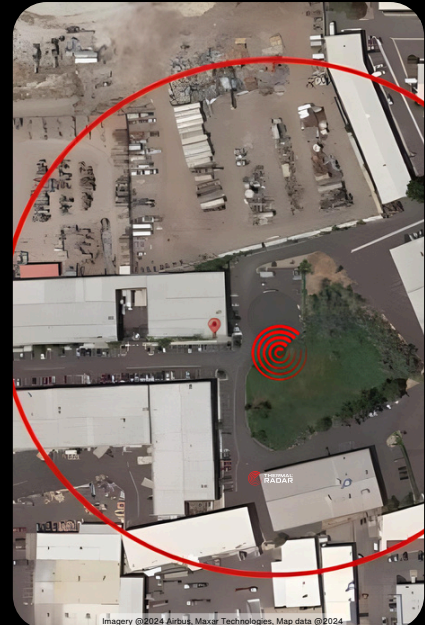
Passive thermal detection and surveillance solution.



Provides slew-to-cue functionality to an integrated PTZ.



No export license is required for most international applications.



Proprietary adaptive analytics result in low false-positive alerts.

**Patented Protection Customized
for Your Organization**